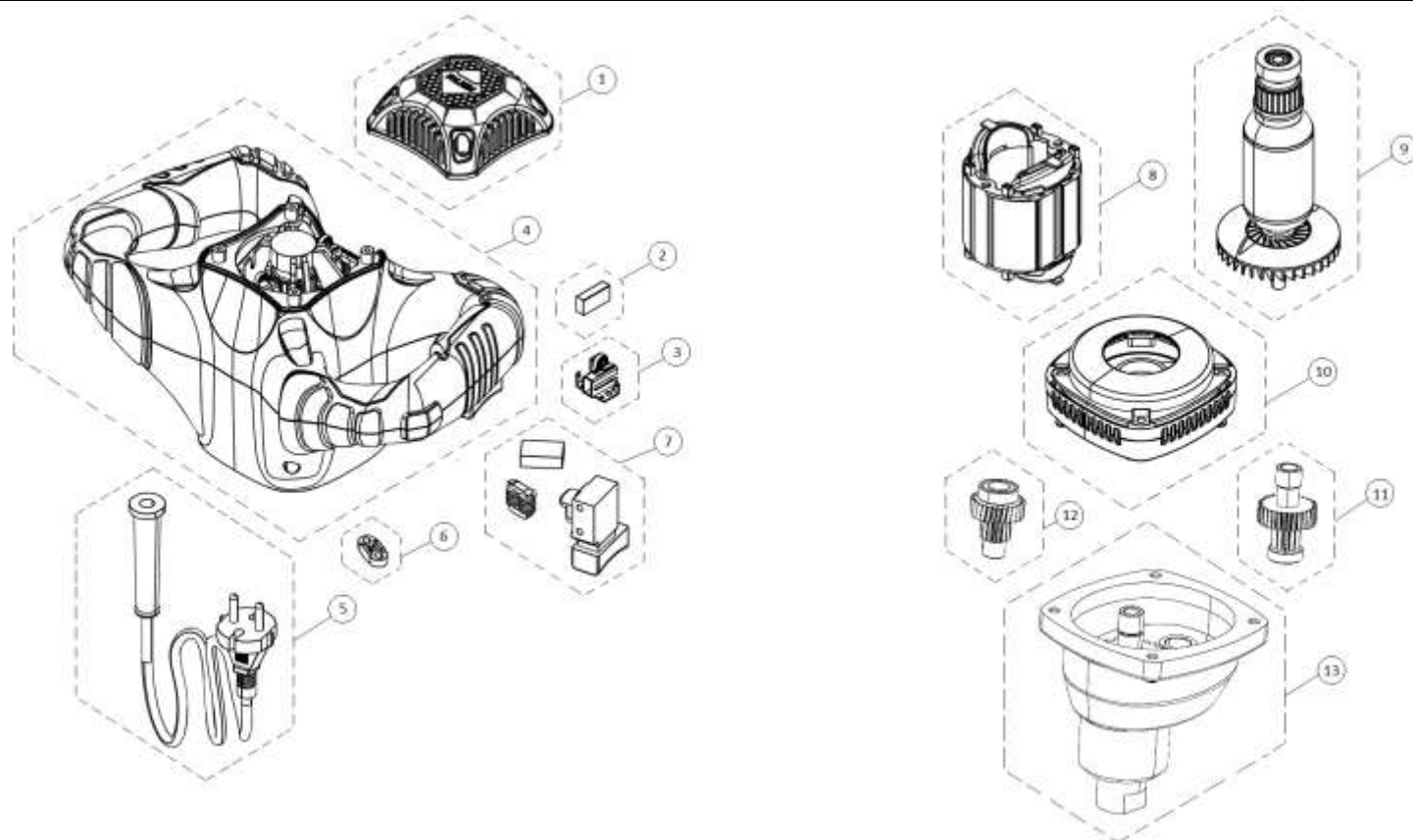


Part-list		ES	EN	Prod.
		GRUPO A	GROUP A	Pag. 2
Prod	ES	EN	From serial num:	
16910	RUBIMIX-8 EASY PRO 230V 50/60H AUS	RUBIMIX-8 EASY PRO 230V 50/60H AUS		
16906	RUBIMIX-8 EASY PRO 120V 50/60 USA	RUBIMIX-8 EASY PRO 120V 50/60 USA		
16905	RUBIMIX-8 EASY PRO 220V 50/60HZ UK	RUBIMIX-8 EASY PRO 220V 50/60HZ UK		
16903	RUBIMIX-8 EASY PRO 230V 50/60HZ	RUBIMIX-8 EASY PRO 230V 50/60HZ		



Part-list	ES	EN	Prod.
1 20666 1	CJ.TAPA VENTILADOR RUBIMIX-8 EASY PRO	RUBIMIX-8 EASY PRO FAN COVER SET	
2 20680 1	CJ.JGO.ESCOBILLAS RUBIMIX-8 EASY PRO 110	RUBIMIX-8 EASY PRO 110V BRUSHES SET	16906
2 20668 1	CJ.JGO.ESCOBILLAS RUBIMIX-8 EASY PRO 230	RUBIMIX-8 EASY PRO 230V BRUSHES SET	16903, 16905, 16910
3 20667 1	CJ.PORTA ESCOBILLAS RUBIMIX-8 EASY PRO	RUBIMIX-8 EASY PRO BRUSH HOLDER SET	
4 20669 1	CJ.CARCASA RUBIMIX-8 EASY PRO	RUBIMIX-8 EASY PRO CASE SET	
5 20685 1	CJ.CABLE RUBIMIX 8 EASY PRO AUS	RUBIMIX 8 EASY PRO AUS CABLE SET	16910
5 20681 1	CJ.CABLE RUBIMIX-8 EASY PRO USA	RUBIMIX-8 EASY PRO USA CABLE SET	16906
5 20679 1	CJ.CABLE RUBIMIX-8 EASY PRO UK	RUBIMIX-8 EASY PRO UK CABLE SET	16905
5 20670 1	CJ.CABLE RUBIMIX-8 EASY PRO EU	RUBIMIX-8 EASY PRO EU CABLE SET	16903
6 20671 1	CJ.FIJACION CABLE RUBIMIX-8 EASY PRO	RUBIMIX-8 EASY PRO FIXING CABLE SET	
7 20672 1	CJ.INTERRUPTOR RUBIMIX-8 EASY PRO	RUBIMIX-8 EASY PRO SWITCH SET	
8 20682 1	CJ.ESTATOR RUBIMIX-8 EASY PRO 110V	RUBIMIX-8 EASY PRO 110V STATOR SET	16906
8 20673 1	CJ.ESTATOR RUBIMIX-8 EASY PRO 230V	RUBIMIX-8 EASY PRO 230V STATOR SET	16903, 16905, 16910
9 20683 1	CJ.ROTOR RUBIMIX-8 EASY PRO 110V	RUBIMIX-8 EASY PRO 110V ROTOR SET	16906
9 20674 1	CJ.ROTOR RUBIMIX-8 EASY PRO 230V	RUBIMIX-8 EASY PRO 230V ROTOR SET	16903, 16905, 16910
10 20675 1	CJ.BASE CAJA ENGRANA.RUBIMIX-8 EASY PRO	RUBIMIX-8 EASY PRO GEAR BOX BASE SET	
11 20676 1	CJ.KIT ENGRANAJE COND.RUBIMIX-8 EASY PRO	RUBIMIX-8 EASY PRO DRIVE GEAR SET	
12 20677 1	CJ.KIT ENGRA.IMPULSOR RUBIMIX-8 EASY PRO	CJ.KIT ENGRA.IMPULSOR RUBIMIX 8 EASY PRO	
13 20678 1	CJ.TAPA CAJA ENGRA.RUBIMIX-8 EASY PRO	RUBIMIX-8 EASY PRO GEAR BOX COVER SET	